



Appendix A

Figures



FIGURES:

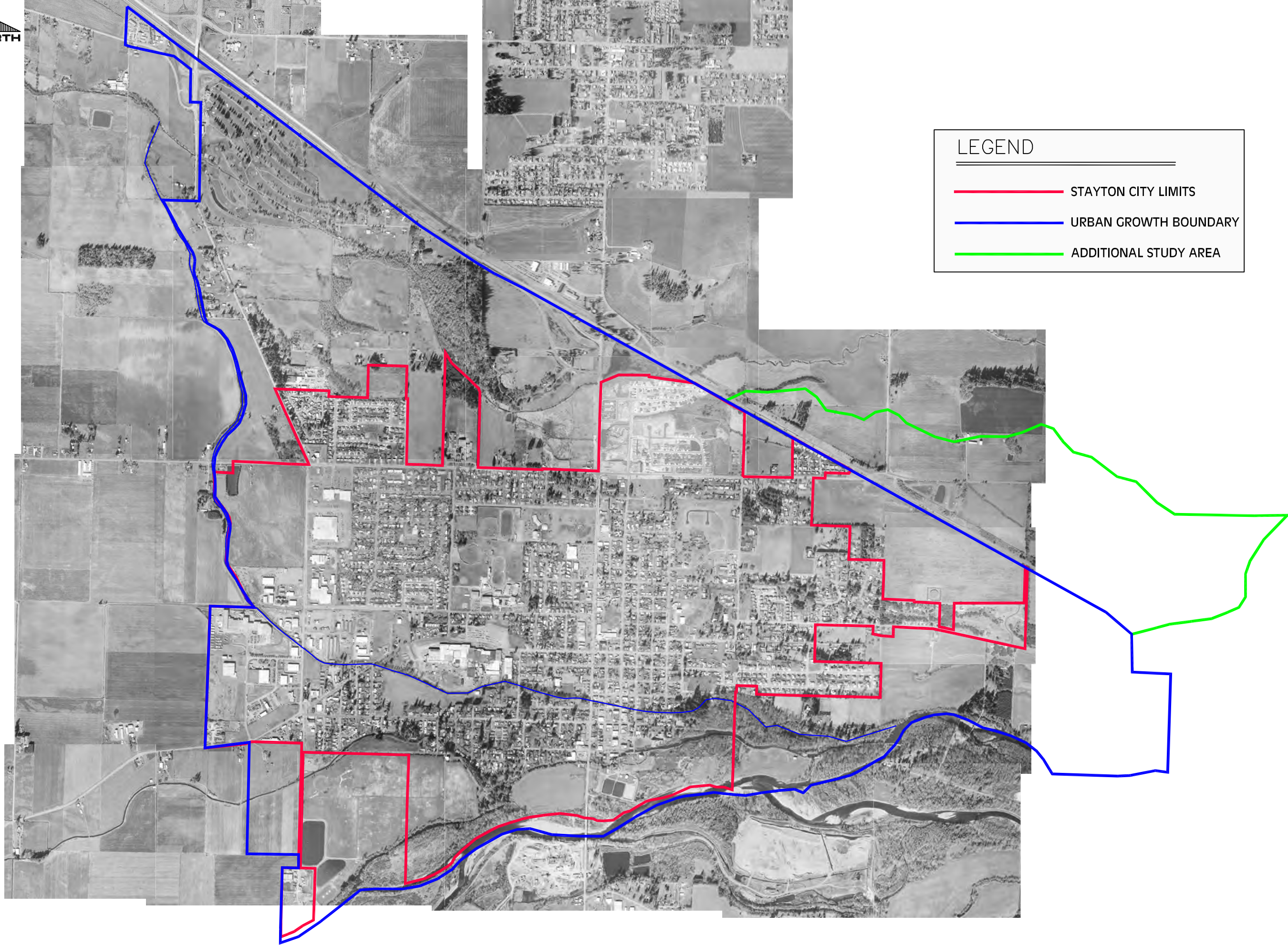
- 1 - Study Area
- 2 - Soil Types
- 3 - Topography
- 4 - Land Use
- 5 - Existing Storm System
- 6 - Major Drainage Basins
- 7 - Minor Drainage Basins
- 8 - Existing Drainage Areas
- 9 - Modeled Lines
- 10 - Problem Areas
- 11 - Recommended Improvements
- 12 - Prioritized Improvements



KELLER
associates



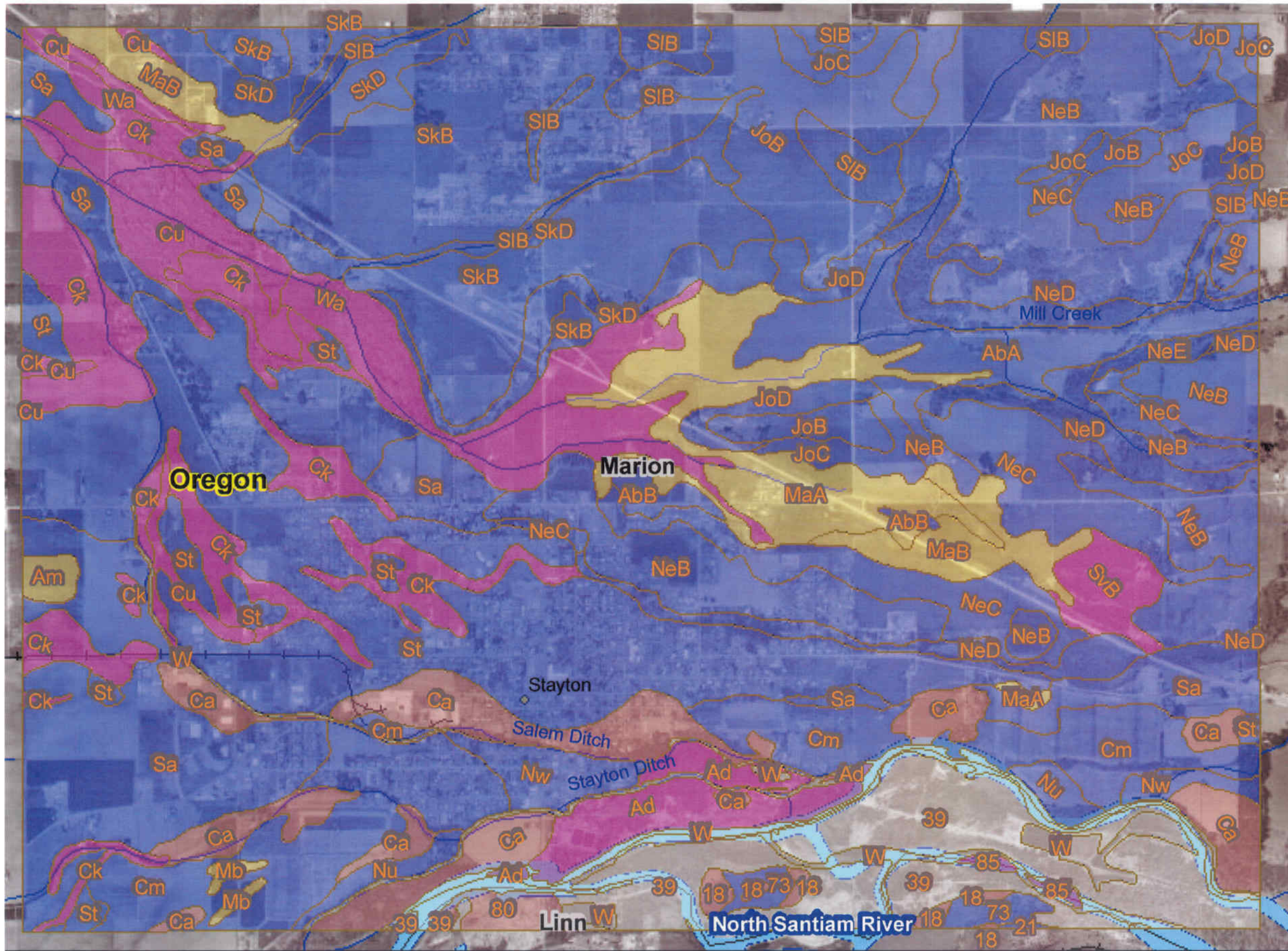
W:\Work\104037 (moved to V)\StormWaterBaseMapping\ReportFigures\FIC-1.dwg



LEGEND

- STAYTON CITY LIMITS
- URBAN GROWTH BOUNDARY
- ADDITIONAL STUDY AREA





LEGEND

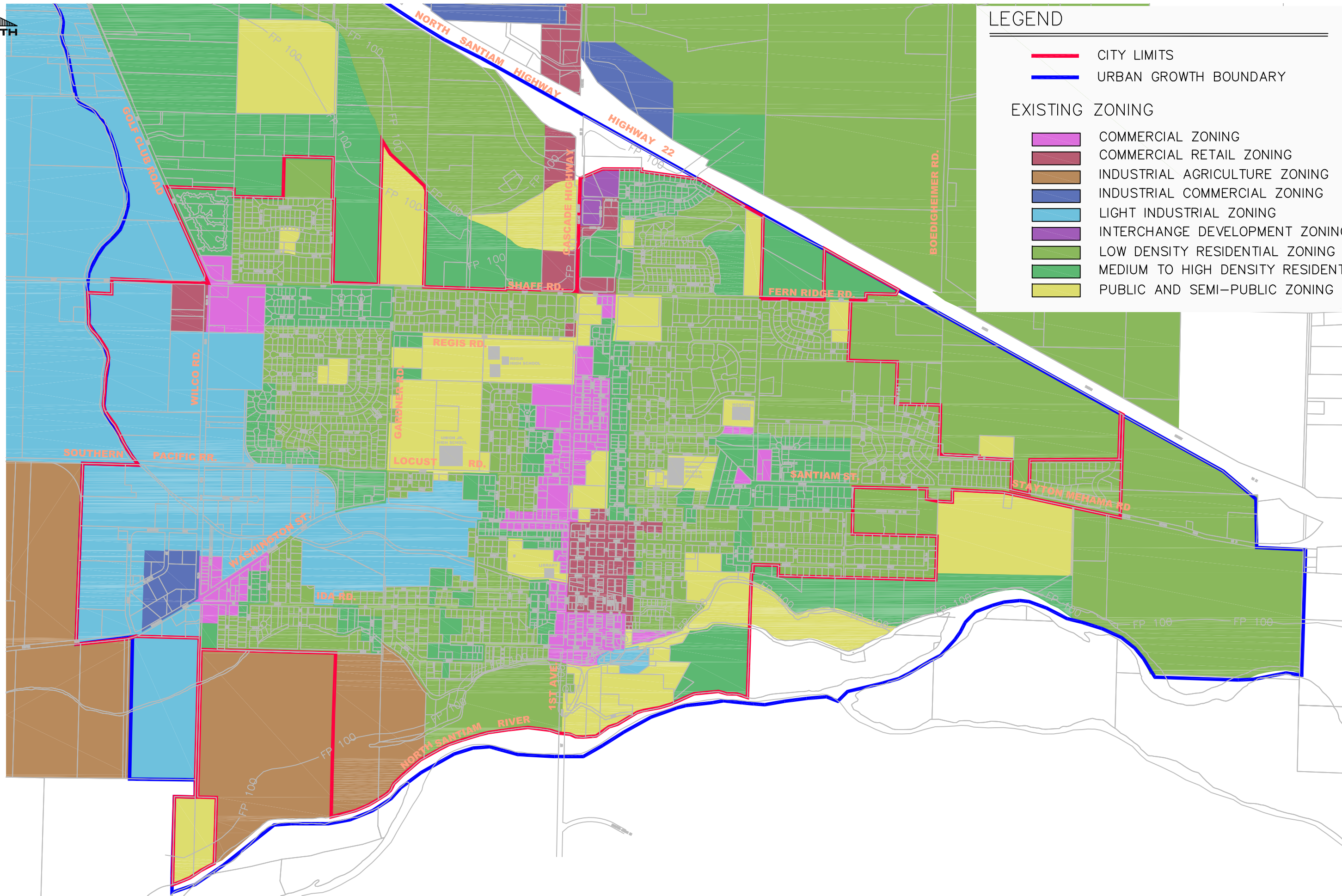
- A
INCLUDES SOIL TYPES:
Ca
- B
INCLUDES SOIL TYPES:
AbA, AbB, Cm, JoB,
JoC, JoD, NeB, NeC,
NeD, NeE, Nu, Nw, Sa,
SkB, SkD, SIB, St
- C
INCLUDES SOIL TYPES:
Am, MaA, MaB, Mb
- D
INCLUDES SOIL TYPES:
Ad, Ck, Cu, SvB, Wa
- NR/NA

W:\Work\104037 moved to V\stormwater\Basing\Reporting\ReportFigures\FIC-2.dwg





W:\Work\104037 (moved to V)\StormWaterBaseMapping\ReportFigures\FIG-4.dwg



LEGEND

- CITY LIMITS
- URBAN GROWTH BOUNDARY

EXISTING ZONING

- COMMERCIAL ZONING
- COMMERCIAL RETAIL ZONING
- INDUSTRIAL AGRICULTURE ZONING
- INDUSTRIAL COMMERCIAL ZONING
- LIGHT INDUSTRIAL ZONING
- INTERCHANGE DEVELOPMENT ZONING
- LOW DENSITY RESIDENTIAL ZONING
- MEDIUM TO HIGH DENSITY RESIDENTIAL ZONING
- PUBLIC AND SEMI-PUBLIC ZONING

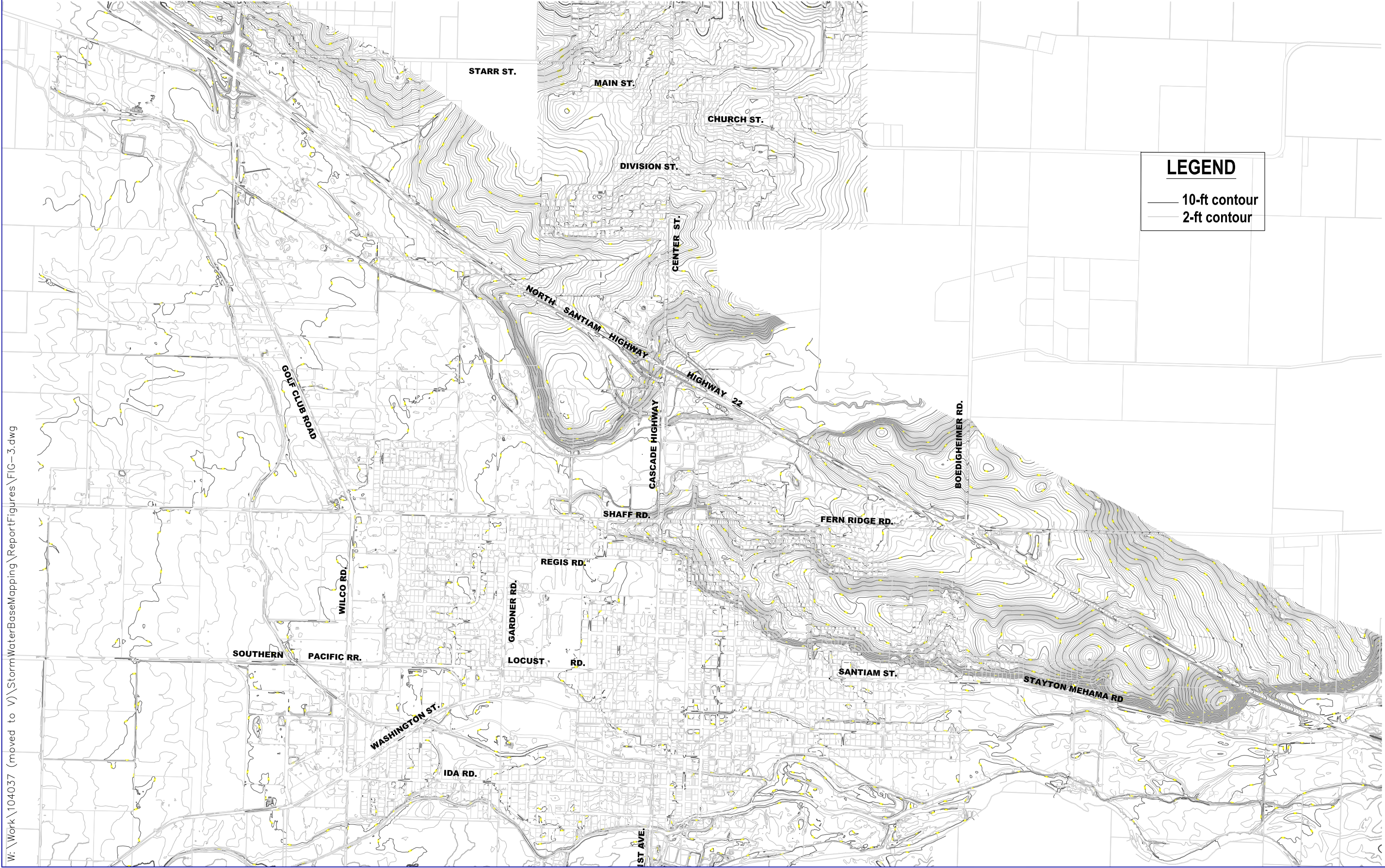
KA:104037
FIG-4.dwg



Storm Water Master Plan
Stayton, OR

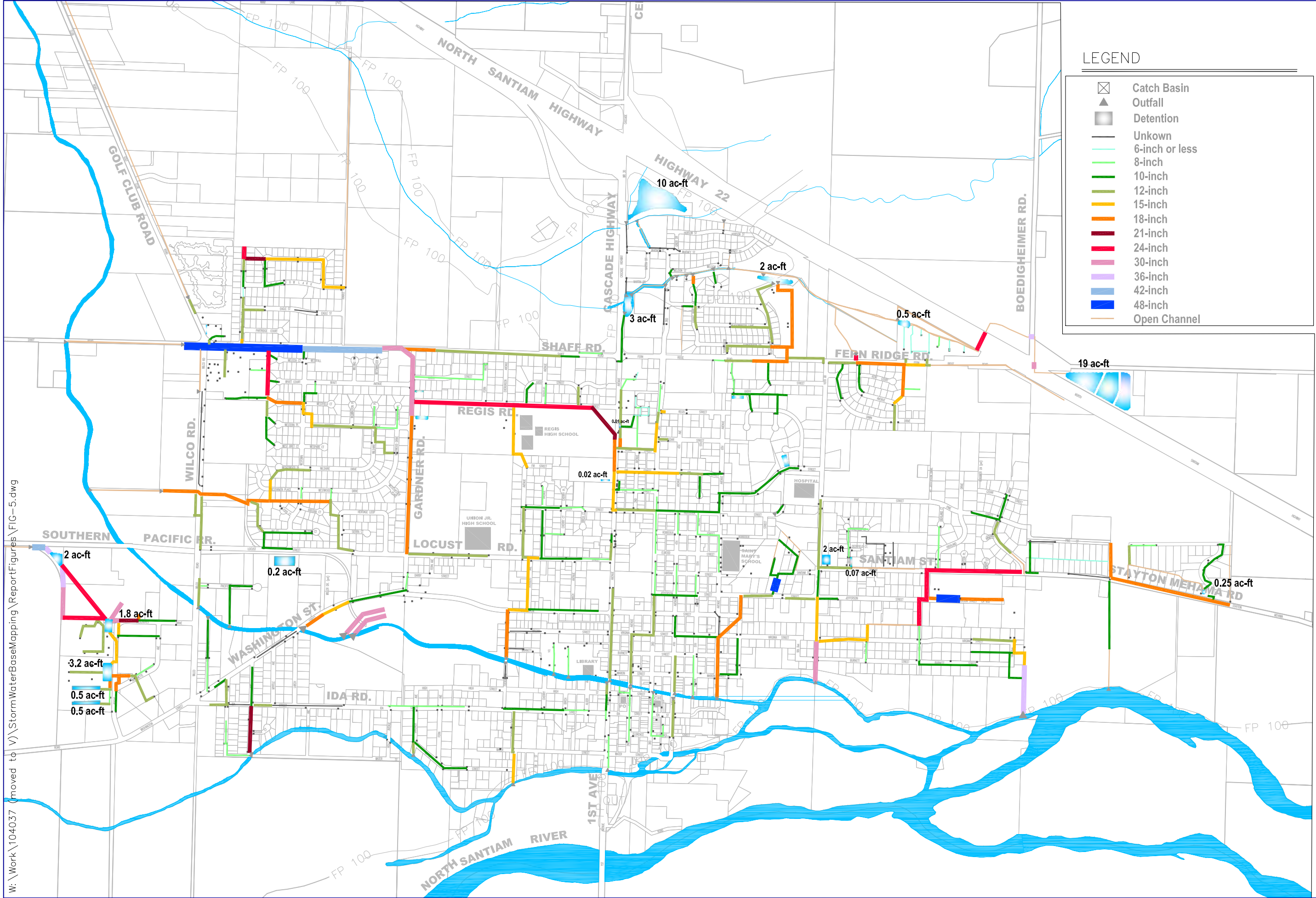
Land Use

FIGURE
4



LEGEND
— 10-ft contour
— 2-ft contour

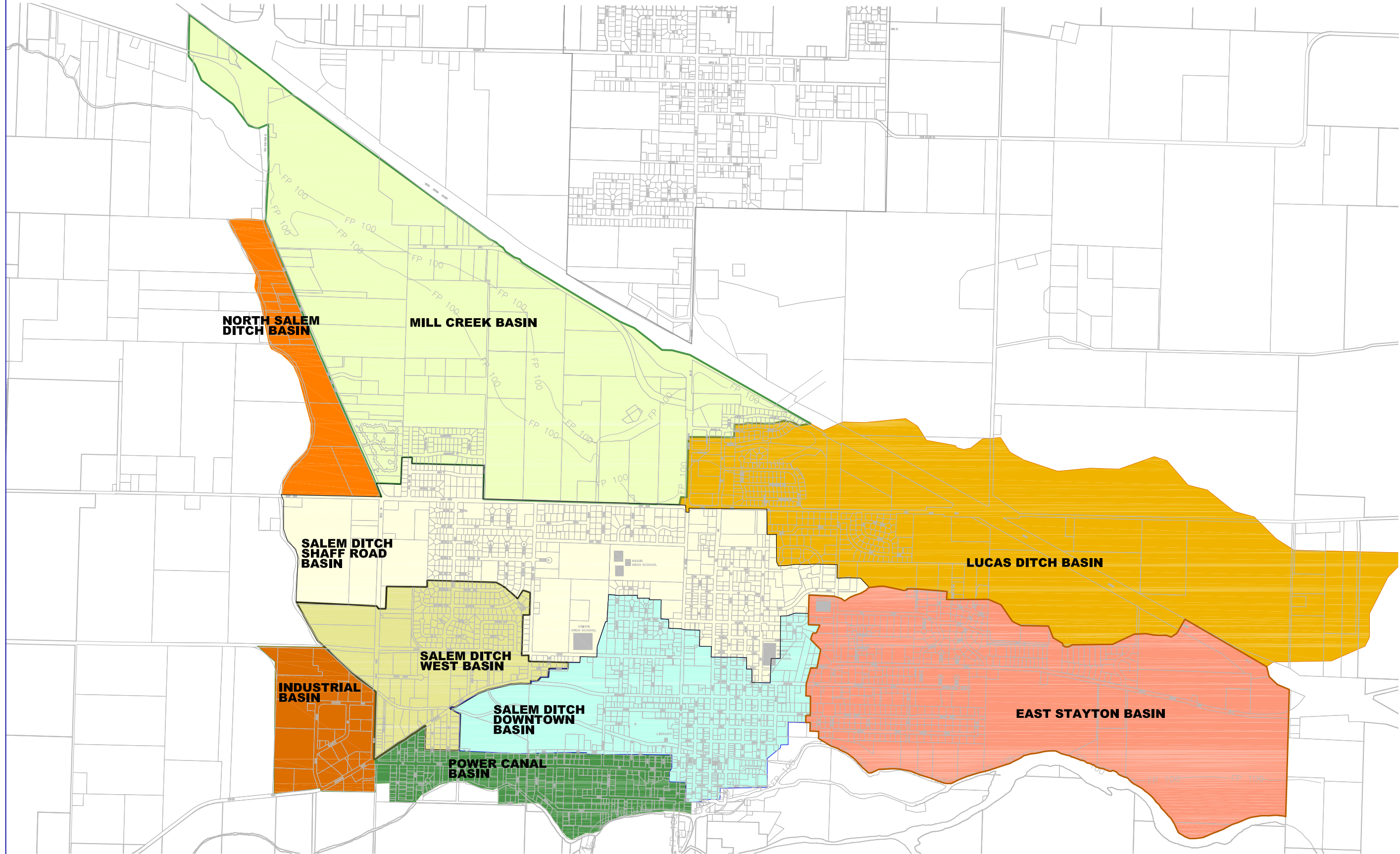
W:\Work\104037 (moved to V)\StormWaterBaseMapping\ReportFigures\FIG-3.dwg

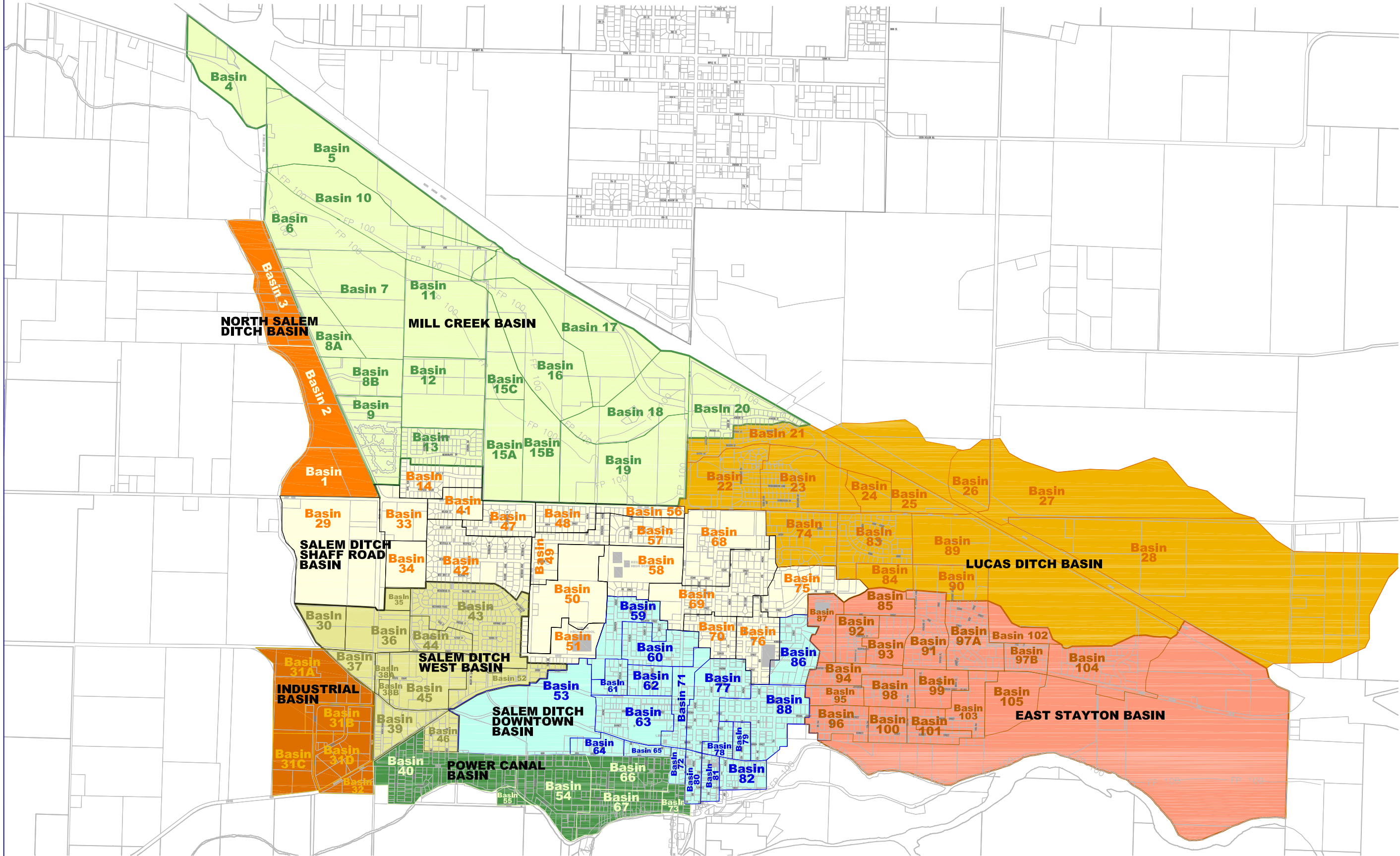


LEGEND

	Catch Basin
	Outfall
	Detention
	Unknown
	6-inch or less
	8-inch
	10-inch
	12-inch
	15-inch
	18-inch
	21-inch
	24-inch
	30-inch
	36-inch
	42-inch
	48-inch
	Open Channel

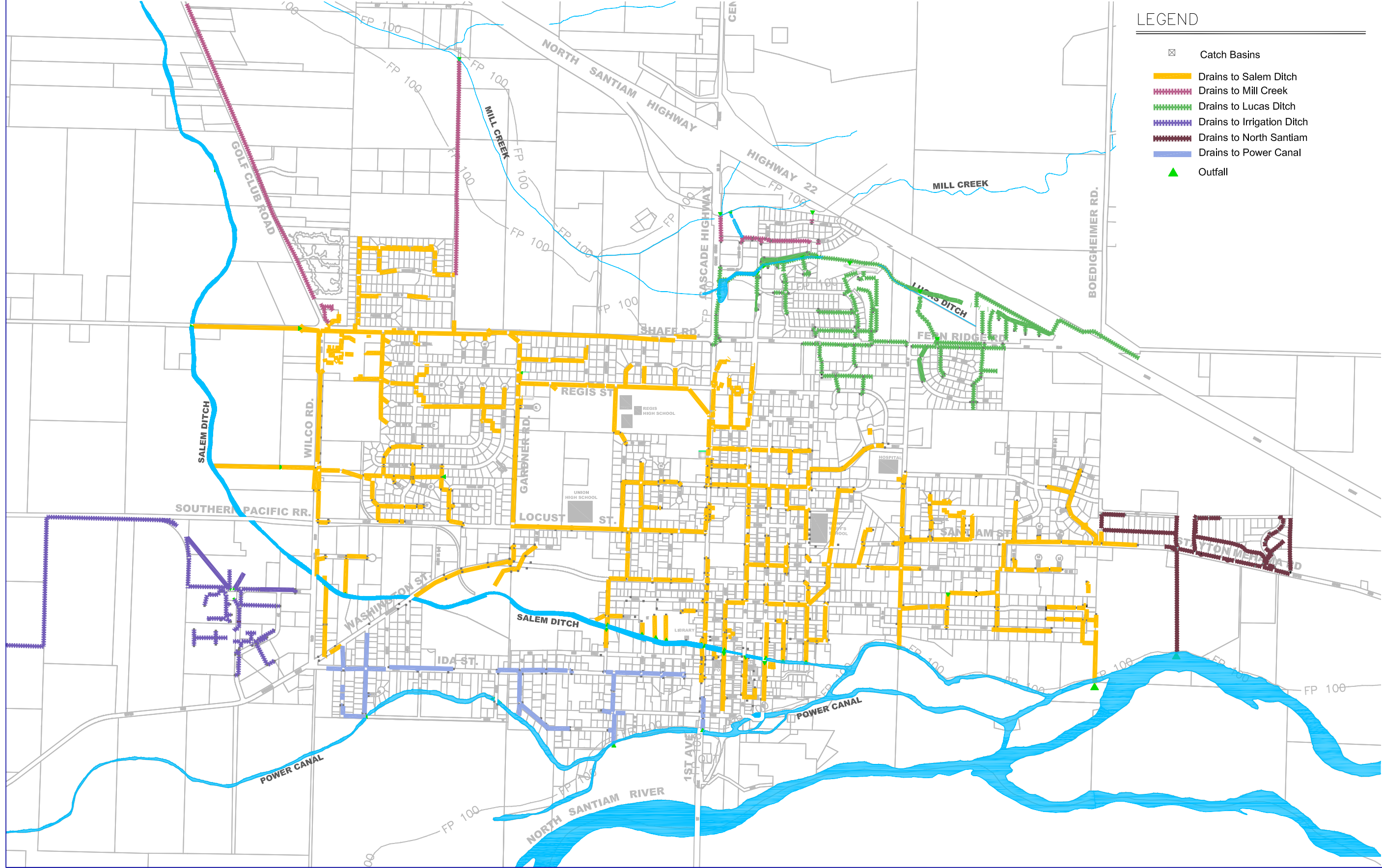
W:\Work\104037 (moved to V)\StormWaterBaseMapping\ReportFigures\FIG-5.dwg





W:\Work\104037 (moved to V)\StormWaterBaseMapping\ReportFigures\Fig-7.dwg





LEGEND

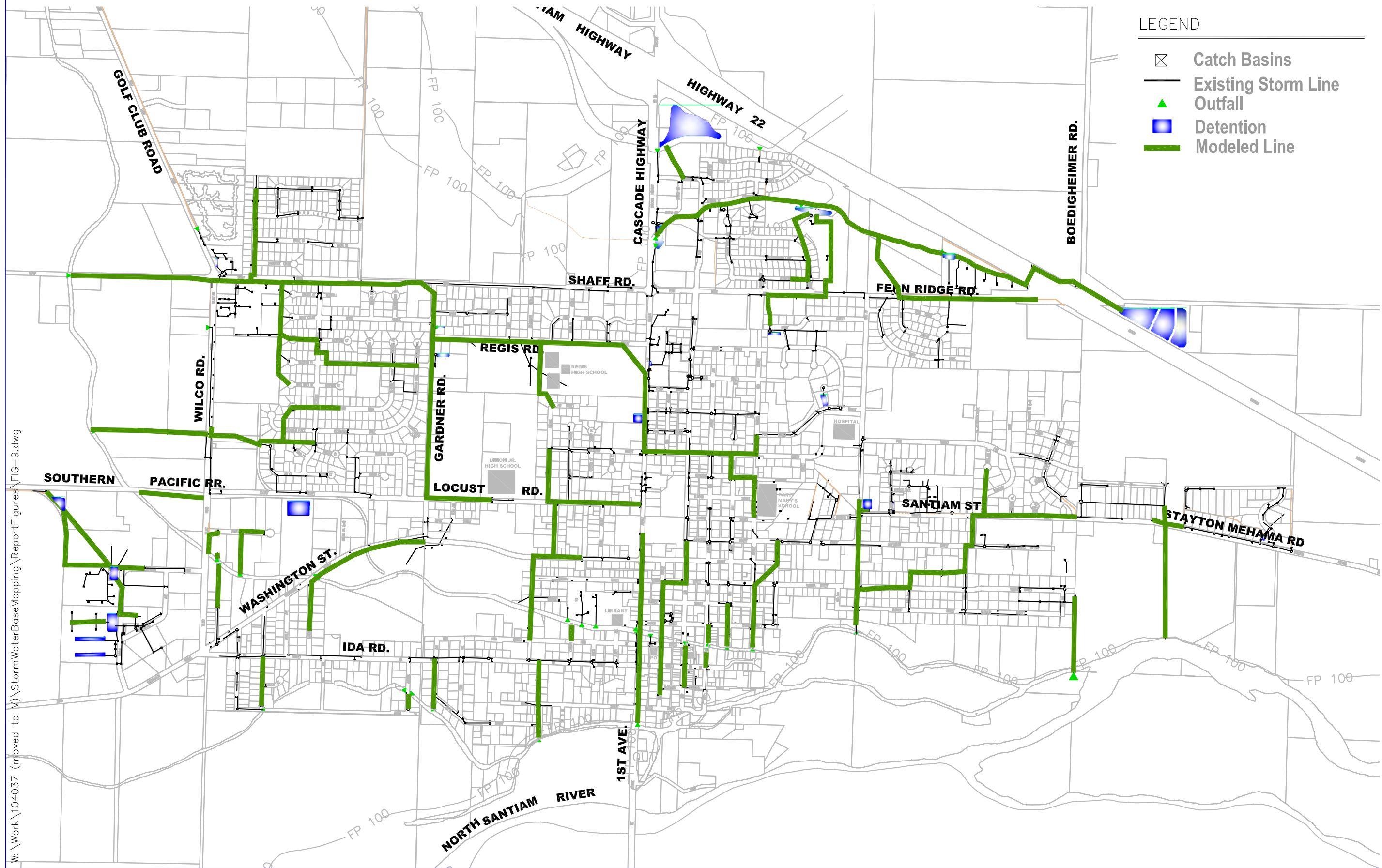
- Catch Basins
- Drains to Salem Ditch
- Drains to Mill Creek
- Drains to Lucas Ditch
- Drains to Irrigation Ditch
- Drains to North Santiam
- Drains to Power Canal
- Outfall








W:\Work\104037 (moved to V)\StormWaterBaseMapping\ReportFigures\Fig-8.dwg



NORTH

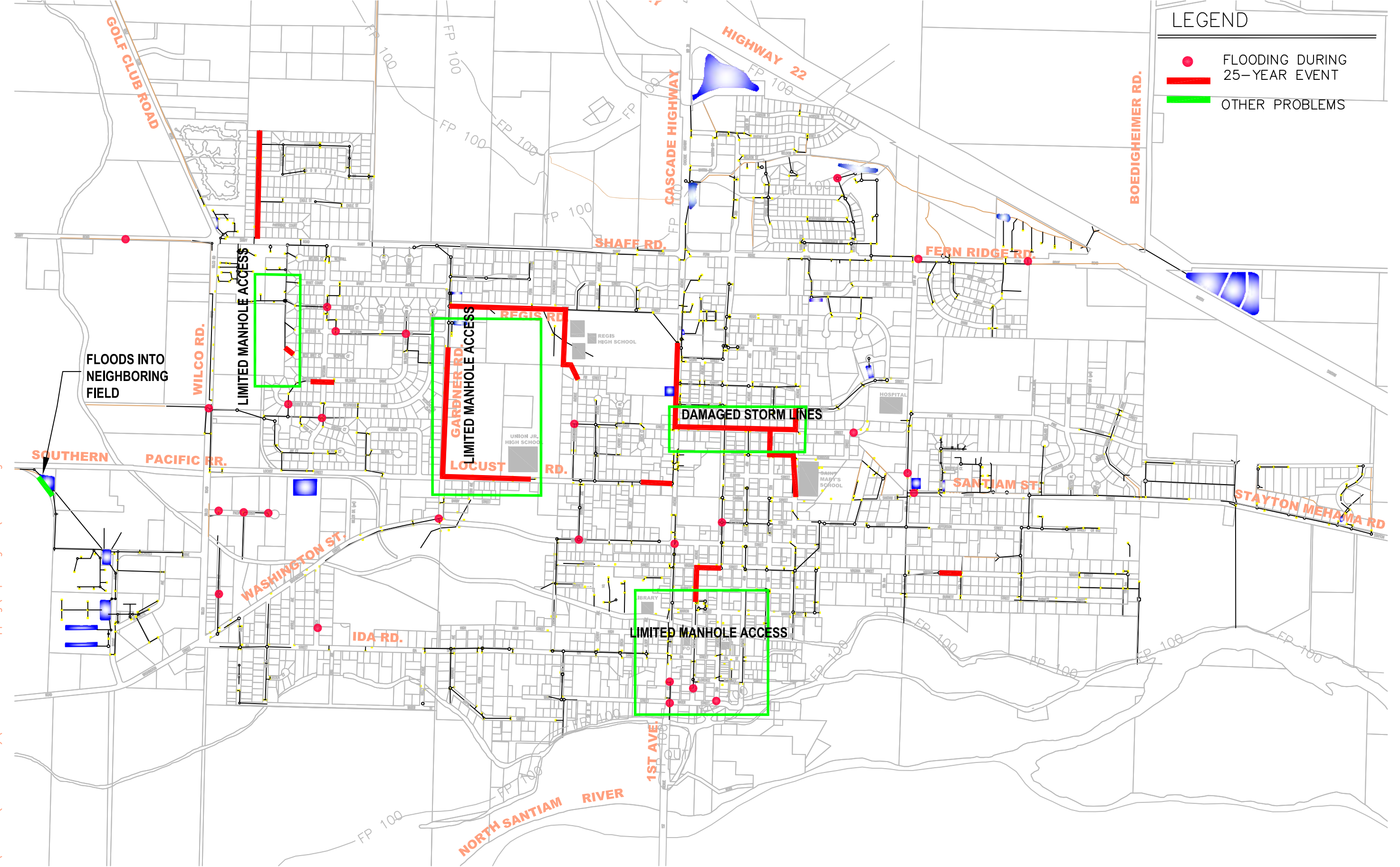


LEGEND

-  Catch Basins
-  Existing Storm Line
-  Outfall
-  Detention
-  Modeled Line

W:\Work\104037 (moved to V)\StormWaterBaseMapping\ReportFigures\FIG-9.dwg



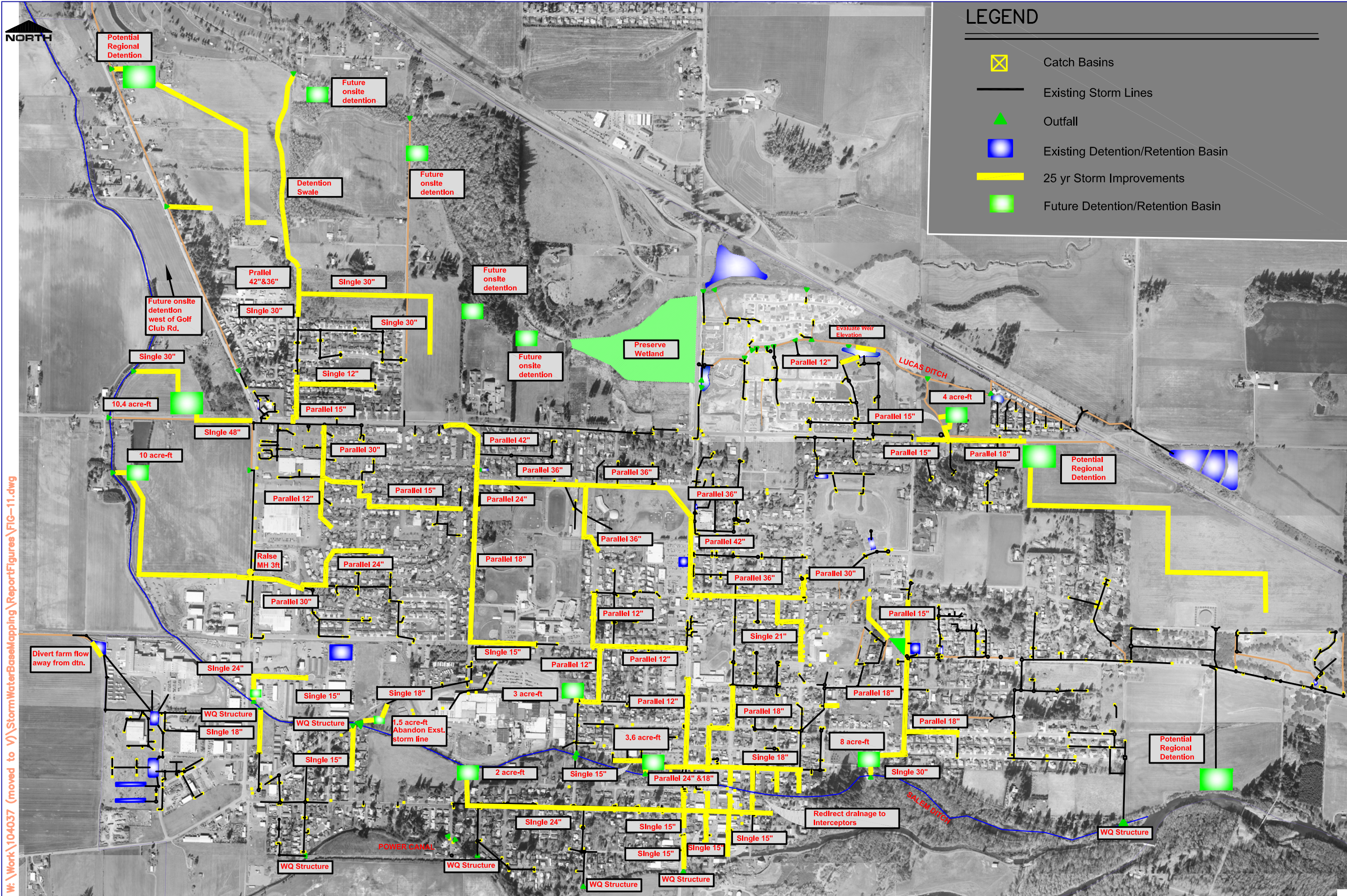


LEGEND

- FLOODING DURING 25-YEAR EVENT
- OTHER PROBLEMS

W:\Work\104037 (moved to V)\StormWaterBaseMapping\ReportFigures\FIG-10.dwg





LEGEND

- ⊠ Catch Basins
- Existing Storm Lines
- ▲ Outfall
- Existing Detention/Retention Basin
- 25 yr Storm Improvements
- Future Detention/Retention Basin

W:\Work\104037 (moved to V)\StormWaterBaseMapping\ReportFigures\FIG-11.dwg

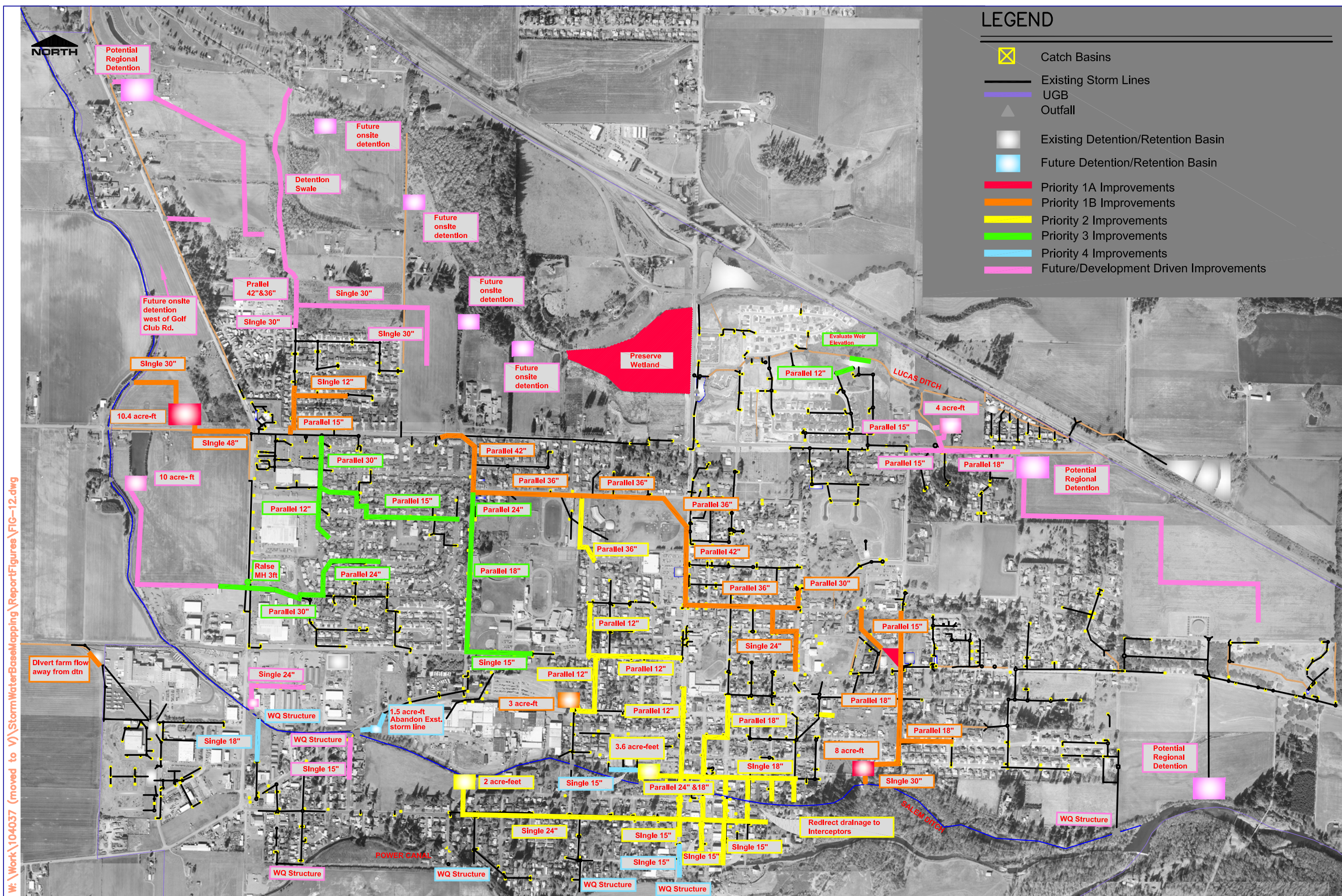
KA:104037
FIG-11.dwg







Storm Water Master Plan
Stayton, OR

Recommended
Improvements

FIGURE
11



LEGEND

-  Catch Basins
-  Existing Storm Lines
-  UGB
-  Outfall
-  Existing Detention/Retention Basin
-  Future Detention/Retention Basin
-  Priority 1A Improvements
-  Priority 1B Improvements
-  Priority 2 Improvements
-  Priority 3 Improvements
-  Priority 4 Improvements
-  Future/Development Driven Improvements

W:\Work\104037 (moved to V)\StormWaterBaseMapping\ReportFigures\FIG-12.dwg

KA:104037
FIG-12.dwg



Storm Water Master Plan
Stayton, OR

Prioritized
Improvements

FIGURE
12